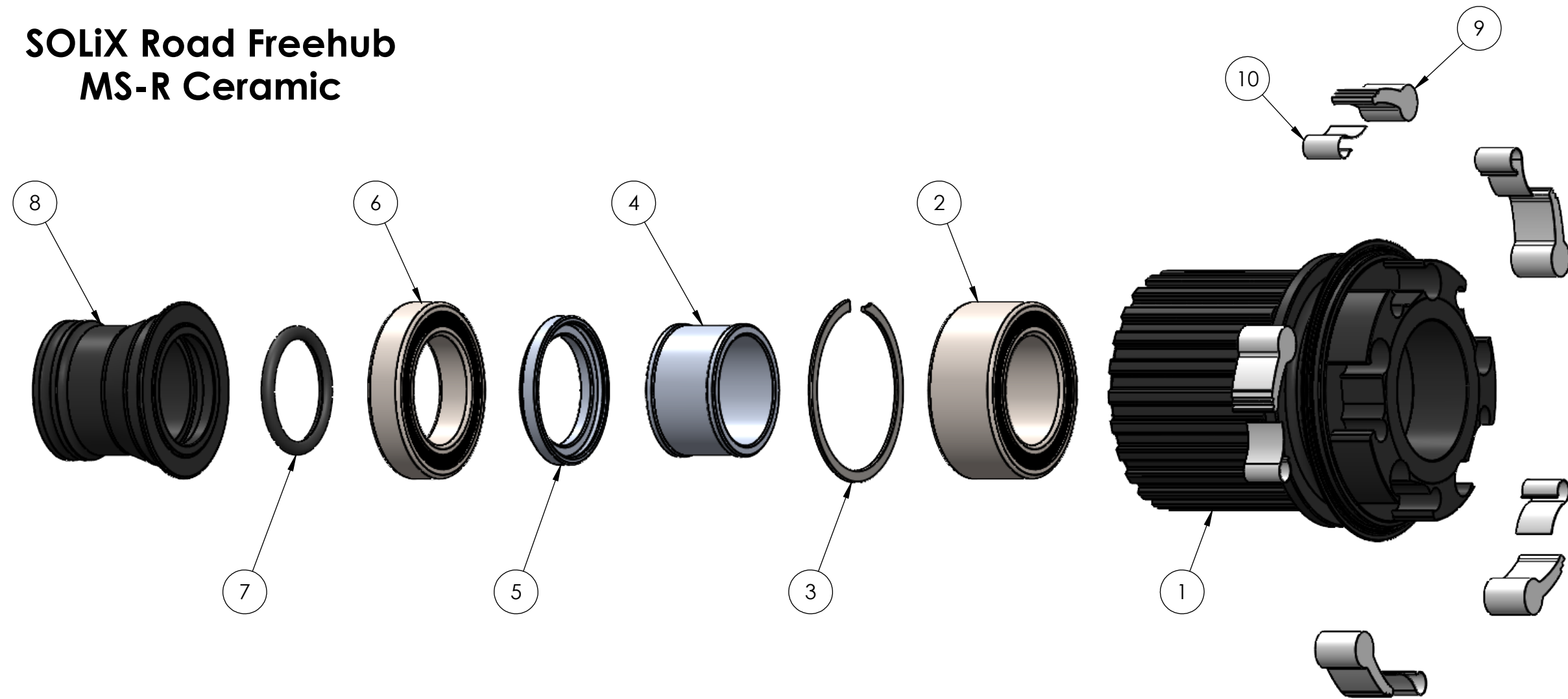


SOLiX Road Freehub MS-R Ceramic



| ITEM NO. | PART NUMBER | DESCRIPTION | QTY. |
|----------|-------------|--|------|
| 1 | RFH3527 | SL Road MS | 1 |
| 2 | BB3802_DR | BALL BEARING, 15 x 24 x 10 | 1 |
| 3 | RFH3519 | Smalley VHM-24-S02 | 1 |
| 4 | RFH3524 | Solix Road Freehub Spacer | 1 |
| 5 | RFH3528 | 2mm Ceramic MS/N3W Freehub Spacer Add-On | 1 |
| 6 | BB6802A3 | Ball Bearing, 15 x 24 x 5 | 1 |
| 7 | HAXOR916 | O-Ring 1/16 x 9/16 | 1 |
| 8 | HAX2644 | Hydra-1/1 End Cap Micro Spline Rear DS | 1 |
| 9 | RFH3532 | Solix Pawl | 5 |
| 10 | HFH2533 | Hydra - 1/1 - Solix Pawl Spring | 5 |

PROPRIETARY AND CONFIDENTIAL
 THE INFORMATION CONTAINED IN THIS DRAWING IS THE SOLE PROPERTY OF INDUSTRY NINE COMPONENTRY. ANY REPRODUCTION IN PART OR AS A WHOLE WITHOUT THE WRITTEN PERMISSION OF INDUSTRY NINE COMPONENTRY IS PROHIBITED.

| | | | | | |
|-------------|---------|--|-----------|------|---------------------------------|
| | | UNLESS OTHERWISE SPECIFIED: | NAME | DATE | |
| | | DIMENSIONS ARE IN INCHES TOLERANCES: FRACTIONAL: ± 1/32 ANGULAR: ± 0.5 deg TWO PLACE DECIMAL ±0.01 THREE PLACE DECIMAL ±0.005 | DRAWN | | |
| | | INTERPRET GEOMETRIC TOLERANCING PER: | CHECKED | | SIZE DWG. NO. REV |
| | | MATERIAL | ENG APPR. | | |
| NEXT ASSY | USED ON | FINISH | MFG APPR. | | SCALE: 2:1 WEIGHT: SHEET 1 OF 1 |
| APPLICATION | | DO NOT SCALE DRAWING | COMMENTS: | | |